

SECTION 14 CULTURAL HERITAGE**Table of Contents**

List of Figures	1
14 CULTURAL HERITAGE	2
14.1 Introduction	2
14.2 Methodology.....	2
14.3 Existing Environment	2
14.4 Archaeological Heritage	2
14.4.1 Record of Protected Structures	3
14.5 Cultural Heritage	3
14.6 Material Assets.....	3
14.7 Natural Assets	4
14.8 Transport Network.....	4
14.9 Settlements.....	4
14.10 Utilities	5
14.11 Potential Negative Impacts	5
14.11.1 Potential Negative Impacts on Cultural Heritage Assets	5
14.12 Mitigation Measures.....	5
14.12.1 Mitigation Measures for Cultural Heritage Assets.....	5
14.13 References	6

List of Figures

Figure 14.1: Location of protected structure in relation to subject site.....	3
Figure 14.2: Rural Area Types in relation to the subject site.....	4
Figure 14.3: Location of dwellings and the main structures in relation to the subject site.	5

14 CULTURAL HERITAGE

14.1 Introduction

This section of the remedial Environmental Impact Assessment Report (rEIAR) evaluates the significant effects, if any, on the cultural heritage, archaeology and architecture that can reasonably be expected to occur, or have already occurred, as a result of the quarry development. An impact assessment and mitigation strategy has been prepared. The scope of this section includes:

- An assessment and description of the archaeological heritage of the area.
- An assessment and description of the cultural heritage of the area.
- A recommendation of mitigation or remedial measures to reduce or mitigate against any potential impacts.

14.2 Methodology

This study complies with the requirements of Directive EIA 2014/52/EU and is an assessment of the known or potential cultural heritage resources within the general area and includes the information that may reasonably be required for reaching a reasoned conclusion on the significant effects of the project on the cultural environment, taking into account current knowledge and methods of assessment. It consists of a collation of existing written and graphic information in order to identify the likely context, character, significance and sensitivity of the known or potential cultural heritage, archaeological and structural resources using an appropriate methodology (EPA 2002 and 2003).

The study involved detailed investigation of the cultural heritage including the archaeological, architectural and historical background of the proposed development site and the surrounding area. Information was accessed from the following sources:

- Records of Monuments and Places of Donegal County Council <https://www.donegalcoco.ie//culture/heritage/archaeologicalheritage/recordofmonumentplacesrmp/> The Sites and Monuments Record which is maintained by the Department of Culture, Heritage and the Gaeltacht and can be viewed at <https://maps.archaeology.ie/HistoricEnvironment/>
- Donegal County Council 2018 – *Donegal County Development Plan 2018-2024 Part B: Objectives and Policies of the Plan Chapter 7: The Natural and Built Heritage*
- Archaeological Survey of Ireland, www.archaeology.ie
- Database of Irish Excavation Reports www.excatations.ie

14.3 Existing Environment

The subject site is located approximately 4km West of the village of St. Johnston in East Co. Donegal. The site is located in the townland of Trentamucklagh and is served by the local secondary road L-5414, which connects to the local primary road L-1264-4. The site is located in a rural area with sporadic once-off houses and farmsteads. The surrounding countryside is undulating, and land use is predominantly agriculture with some isolated blocks of commercial forestry. More extensive forestry is more prevalent in higher ground north of the site on the slopes of Dooish Mountain. The subject site is mostly hidden from the L-1264-4 road as the mature tree line along the road is shielding it from sight as well as the nature of the topography with distance views available of part of the quarry from the western approach on the local road.

14.4 Archaeological Heritage

The nearest Recorded Archaeological Monuments to the site is a Standing stone located c850 south east of the quarry in the townland of Treantagh.

The monument is described on www.archaeology as DG062-039---- and its description is

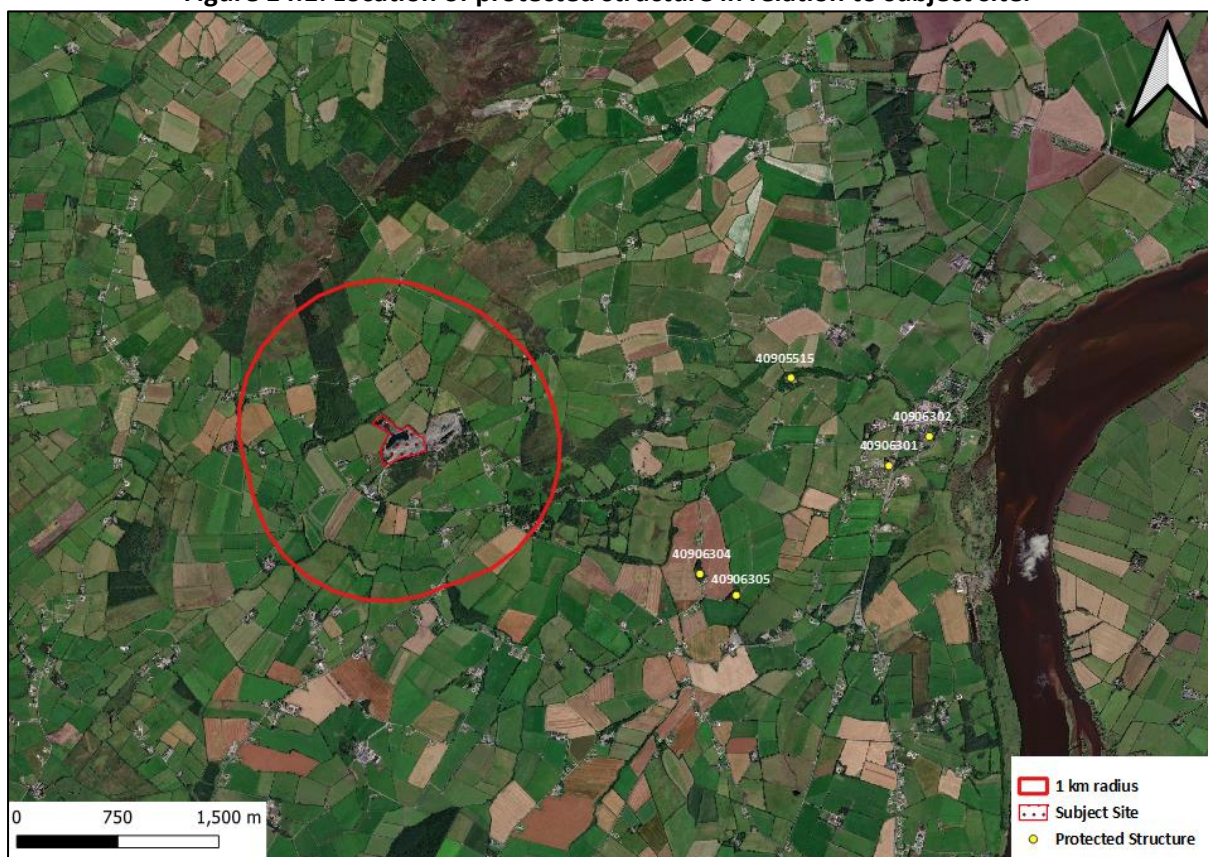
On the NNW-facing slope of a prominent drumlin ridge in tillage (barley). Large, irregularly-shaped stone (H 1.4m; Wth at base 1.45m; max. Wth. 2.46m; T 0.6m), aligned NNE-SSW and tapering to a point. Adjacent to the foot of the stone on the ESE side are three large irregularly-shaped stones. There are two at the WNW side. This is a prominent feature on the landscape and is known in the locality as an ancient monument. Accordingly, an oval-shaped area (dims. 8m x 3.5m) around the stone has been left untilled

The closest protected structure is located 2.15km from the subject site, which is a privately owned detached five-bay two-storey over basement house which was built c. 1740.

14.4.1 Record of Protected Structures

The closest protected structure is 2.15km from the subject site. This is not within the 1km radius of the subject site therefore within the noise and ground vibrations limits. The effect of noise and vibrations are discussed in more detail in chapter 9 of this EIAR. Figure 14.1 below shows the location of the protected structures in relation to subject site.

Figure 14.1: Location of protected structure in relation to subject site.



(This map was created using QGIS)

14.5 Cultural Heritage

The effect of noise and vibrations from this subject site on architectural structures is discussed in more detail within Section 9 of this rEIAR. Negative effects from noise and vibration after mitigation have been assessed as imperceptible. The subject site does not affect any aspect of folklore, tradition, religion and language and dialect.

14.6 Material Assets

Natural material assets include the landscape amenity value of surrounding area, air and water resources and both renewable and non-renewable resources. Impacts to both air and water quality post mitigation have been assessed as imperceptible. (See Sections 8 & 10 of this rEIAR for full detail).

Man-made material assets include local settlements, transport infrastructure and major utilities and detailed in Section 12 Material Assets – Traffic and Section 13 Material Assets – Site Services. Negative effects from quarrying activities on material assets post mitigation have been assessed as imperceptible.

14.7 Natural Assets

The subject of landscape is addressed in Section 15. The resources of water and air quality are dealt with in Sections 8 and 10. The extraction of rock from the quarry is a depletion of a non-renewable resource. The extraction of rock has adversely affected this natural resource, but this is inevitable with the nature of the project. The loss of geological resources in the area post mitigation has been assessed as Moderate (see Section 7 of this rEIAR for full detail). The loss of habitat within the site post mitigation has been assessed as imperceptible (see Sections 6 and 15 of this rEIAR for full detail). There are no renewable resources (wind energy, hydro power) associated with the quarry site and no impact on any renewable resources outside the site boundary is predicted to have occurred as a result of the development.

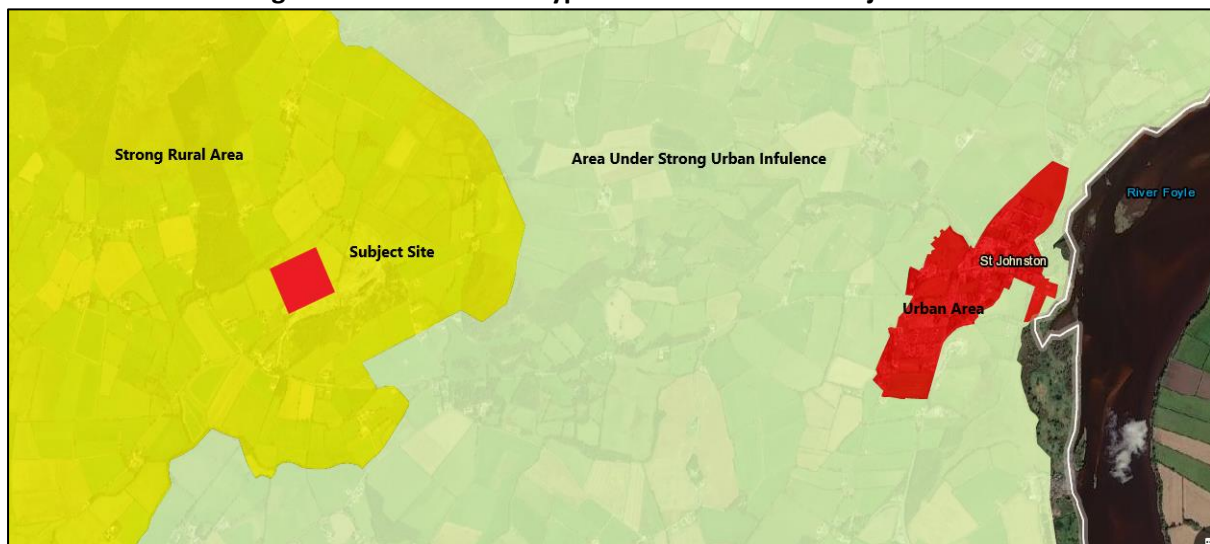
14.8 Transport Network

The subject of Traffic is addressed in Section 12. In the past when the quarry was operating at peak trade approximately 20 loads per day were produced, compared to 5 loads per day at present. The quarry has 2 lorries in operations generating 10 traffic movements per day. Assuming working hours are 8-6pm, this is approximately 1 vehicle movement per hour. This will not have any significant impact on the transport network.

14.9 Settlements

The subject site is located in the rural townland of Trentamucklagh, St. Johnston, Co. Donegal. In the Donegal County Development Plan 2018-2024 the area is classed as a 'Strong Rural Area' as shown in Figure 14.2.

Figure 14.2: Rural Area Types in relation to the subject site



CYAL50244901 © Ordnance Survey Ireland/Government of Ireland.

The location of dwellings and the main structures of concern are outlined on Figure 14.3 below, these are:

- Dwelling houses some of which are also listed as protected structures.

These houses are numbered 1-30 in Figure 14.3.

Figure 14.3: Location of dwellings and the main structures in relation to the subject site.

(This map was created using QGIS).

14.10 Utilities

Existing utilities are limited as there is currently no mains water supply or mains wastewater facilities available to the subject site. A septic tank system and associated percolation area had been in place until approximately 2015. The system has since been decommissioned and removed from site. Welfare facilities are now provided at the applicant's dwelling house a short distance off site. There is no washing of quarry product. Water is required for dust suppression in periods of prolonged dry weather and water is required for the proposed wheel wash. Dust suppression water and water for the proposed wheel wash will be supplied from the settlement ponds within the site. There is currently no electricity or telecommunications supplied to the site.

14.11 Potential Negative Impacts

14.11.1 Potential Negative Impacts on Cultural Heritage Assets

No cultural heritage assets have been negatively affected by the quarrying on the subject site.

Mitigation measures have been proposed for natural heritage assets that have potential to be negatively affected. These are presented in Section 6: *Biodiversity*, Section 7: *Land Soils & Geology*, Section 8: *Water*, Section 9: *Air* and Section 15: *Landscaping & Restoration*.

14.12 Mitigation Measures

14.12.1 Mitigation Measures for Cultural Heritage Assets

There has not been and will not be any significant negative impacts to Material Assets with the continued operation of this quarry. No mitigation measures are required in this regard.

14.13 References

Donegal County Council, County Donegal Development Plan 2018-2024, Rural Area Types Map.

<https://donegal.maps.arcgis.com/apps/View/index.html?appid=7b44cab1b818490a9d6c264db534d4d2&extent=-9.0677,54.5439,-6.4309,55.3836>

Excavations.ie. Database of Irish Excavation Reports. https://excavations.ie/advanced-search/?exca_a=advanced_search&y=&c=Donegal&a=&snu=&sna=&st=&rtc=&itm=&smrn=&eln=

Records of Monuments and Places of Donegal County Council

<https://www.donegalcoco.ie//culture/heritage/archaeologicalheritage/recordofmonumentplacesrmp/>